

The Kingfisher



News from the Black Creek Conservation Project **Spring 2011**

Note from the President...

It's about engaging communities!

Every year the Black Creek Conservation Project of Toronto revisits our approach to improving and maintaining the health of the Black Creek watershed and every year we find new and exciting ways of engaging communities in this effort. In the past we have worked with volunteers, schools and other community groups. We have planted trees, wildflower gardens, conducted clean-up events and lead educational walks. The best approach however, always means getting the public involved and we will be putting extra effort into this in 2011 as we seek to bring on-board volunteers to manage both community engagement and community event coordination.

With a host of projects and activities up and down the creek this year, we look forward to meeting residents from many neighbourhoods across the watershed!

In this ISSUE:

Parks in the Black Creek Valley

2011 Q1 & Q2 Activities

Recent Activities

Tree Species at Risk in the B.C. ...

Invasive Plants

Visit our website! www.BCCP.ca

Parks and Trails in the Black Creek Watershed (South to North)

Park Location	From	To
Smythe Park- Haney Parkette	Scarlet Rd.	Jane St
Black Creek Parklands West	Jane St. across from Haney Ave.	Rockcliffe Blvd. near Rockcliffe M.S.
Black Creek Parklands East	Rockcliffe Blvd. near Rockcliffe M.S.	Alliance Ave. & Cliff St.
Gaffney Park	Rockcliffe Blvd. & Terry Dr.	Gunns Rd. & (West of Weston Rd.)
Keelesdale Park	Eglinton Ave.	Within park
Gulliver rd. green belt	Culford Rd.	Keele St.
Upwoods Green belt	Blackstone St.	Queens Dr.
Pelmo Park	Gary Dr & Dalbeattie Ave.	Pellatt Dr.
Chalkfarm Park	Jane St. North of Wilson	Gravenhurst Ave.
Heathrow Greenbelt – Giovanni Cabotto Park	Jane St. Near Heathrow Dr.	Tavistock Rd. & Exbury Cres.
Downsview Dells (south end)	Jane St. & Troutbrooke Dr.	Dirt trail to Giltspur Dr.
Downsview Dells Park (north end)	Inside Park parking lot Grass trail to Giltspur Dr.	Sheppard Ave.
Northwood Park (south end)	Sheppard Ave.	Grandravine Dr.
Derrydowns Park	Grandravine Dr.	Finch Ave.
Black Creek Parklands North	Finch Ave.	Shoreham Dr. & BCPV
Driftwood – Edgeley Greenbelt	Tobermory Dr.	Driftwood Ave.
BC Pioneer Village	Within BCPV	Within BCPV

Parks and Trails in the Black Creek Watershed (South to North)

Park Location	Trail	Surface
Smythe Park- Haney Parkette	Trails in east end of park Roadway to the west	Paved
Black Creek Parklands West	Bike path from SW corner to Rockcliffe	Paved
Black Creek Parklands East	Woodchip trail made by BCCP & Archbishop	Dirt / woodchips
Gaffney Park	Lavender Creek Not connected to BC	Paved
Keelesdale Park	Sport field access neighbourhood access	Grass & dirt
Gulliver rd. green belt	Informal Ravine access neighbourhood access	Grass
Upwoods Green belt	Chaminade Area Other informal trails	Paved & dirt
Pelmo Park	Bike path	Paved
Chalkfarm Park	Multiple side street exits	Paved
Heathrow Greenbelt – Giovanni Cabotto Park	Entry behind Driftwood CC	Paved
Downsview Dells (south end)	Leads to Rock Dam	Gravel access Rd. and dirt
Downsview Dells Park (north end)	Several side trails to side streets	Paved
Northwood Park (south end)	Side Trail to Sentinel Rd. (NE)	Paved
Derrydowns Park	Multiple informal dirt side trails	Paved
Black Creek Parklands North	Multiple informal dirt side trails	Paved
Driftwood – Edgeley Greenbelt	Tributary of the BC	Paved
BC Pioneer Village	Trails thru BCPV	Paved, boardwalks, gravel

PUBLIC EVENT SCHEDULE:
APRIL – MAY 2011

April 15. Door-to-Door flyer campaign. Downsview Dells community.

April 21, Tree Delivery Un-loading Day
Rockcliffe Yards, 8:00 am. More hands make short work! Volunteers needed.

April 23, Earth Day Tree planting Downsview Dells
11:00 am – 3:00 pm

The BCCP is establishing a new Treed buffer strip along the edge of the wetland areas in Downsview Dells Park. This planting will help to protect one of the few remaining wetland areas on the Black Creek.

April 30, Environment Day, Downsview Dells, City of Toronto Parks & Rec.
BCCP tables to be displayed. Time TBA.

The BCCP members will attend the City's Environment Day held at Downsview Dells. Display tables will be set up.

May 14 (pm), Smythe Park Trail Restoration, Time TBA

Together with the Humber River Heritage group, the BCCP is attempting to re-establish a natural plant community along a section of the Historic "Carrying Place Trail". Volunteers will be planting 300 native plants and shrubs that once comprised the majority of the watershed.

May 14 (am) Driftwood Park tree planting. 10:00 am.

The BCCP is working with Toronto ACORN, the Jane-Finch community and with Ward 8 City Councilor, Anthony Peruzza to plant trees in Driftwood Park.

This is a continuation of our tree planting in the area over the past 2 years. We expect to plant upwards of 300 trees and shrubs this spring.

May 21 Bird Walk. Downsview Dells, 9:00 am
Walk host: BCCP Bird Enthusiast Barbara Scott. Bring your binoculars!

June 2 Aeroplan/EDC Tree Planting, Downsview Dells.

The BCCP will undertake a Corporate Planting Day on the Downsview Dells Tree Planting – Wetland Protection project.

Upwards of 300 trees will be added to the on going ECOACTION project.

Recent Activities

In March we cleaned our Birdhouses:



Inspecting

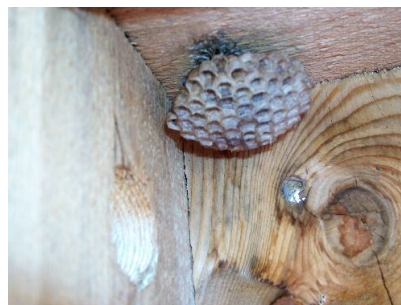


Cleaning



Fixing

We found bird nests in some, wasps also like our birdboxes:



TREE SPECIES AT RISK IN THE BLACK CREEK WATERSHED

From the Ministry of Natural Resources S.A.R. listing for Ontario, several tree species that are native in the Black Creek watershed, have been identified at various levels of risk. These include:

ENDANGERED & regulated:

Cucumber Tree, *Magnolia acuminata*,
Red Mulberry, *Morus rubra*

THREATENED:

Common Hoptree, *Ptelea trifoliata*,
Dwarf Hackberry, *Celtis tenuifolia*,
Kentucky Coffeetree, *Gymnocladus dioica*,

ENDANGERED, not regulated:

Butternut, *Juglans cinera*,
American Chestnut, *Castanea dentata*.

SPECIAL CONCERN:

Blue Ash, *Fraxinus quadrangulata*,
Shumard Oak, *Quercus shumardii*

Of these, the Red Mulberry (Images A, B below), American Chestnut and the Butternut (Images C, D below) may have been once common in the watershed, while the others may have had a presence but were not significant components of local forests. Our watershed is to the northern limits of the ranges for these species. They currently exist and were once common in the Carolinian forest zones of the Niagara region and in the far south-western portion of Ontario.

Opportunity now exists to incorporate some of these 'endangered' species into our planting programs; in fact our historical documents indicate that programs of the late 80's included plantings of butternut.

Unfortunately some difficulties exist: the butternut suffers from a serious fungal disease problem, while the mulberry is prone to low reproduction rates and hybridization with exotic trees (white mulberry, native to Asia). In order to incorporate these species in our programs we will have to research programs under the Endangered Species Acts, both nationally and provincially, and also the availability of suitable nursery stock for each species within our zone.



PULL These Plants, Don't Let them Go to Seed!

Garlic Mustard (*Alliaria petiolata*) (From the Ministry of Agriculture website)

Garlic mustard, a biennial herb in the Mustard Family, is native to Europe and Asia. It is believed that settlers brought this plant to North America for use in cooking and medicine. In Ontario, garlic mustard infestations can be quite dense and advance quickly. Garlic mustard is shade tolerant and predominantly found in rich, moist forests and wooded stream banks.



Garlic mustard

*Photo
Credit:
Dr. John
Meade,
Rutgers
Cooperative
Extension*



Garlic mustard seedling

Dog-strangling Vine (a.k.a. Pale Swallowwort)

This plant is highly invasive. It will thrive in shade, sun and all soil conditions, spread rapidly, reduce or eliminate other plants, and is extremely difficult to control. If you see this plant in your garden, **REMOVE IT IMMEDIATELY.**

(From Fletcher Wildlife Garden)

Dog Strangling Vine is an extremely aggressive plant species from the milkweed family that has traditionally inhabited field borders, roadside and rail tracks. It is possible to eradicate the plants by digging them out during the first year of establishment. Since they can re-sprout from root fragments left in the ground, it is necessary to make sure all roots are removed.

(From Ontario Ministry of Agriculture website)



Did you know...



That our chosen symbol is the Belted Kingfisher? The Kingfisher male spends most of the time building the nest and raising the young while the female is often the more colourful of the pair!

<http://www.libirding.com/Kingfisher.html>

Interested in being involved? **BECOME A MEMBER!**

Join other like-minded people, concerned about their community. Members enjoy voting privileges at monthly meetings, and receive invitations to field trips and special events. Members become involved in organizing and leading community environmental activities

YES, I would like to become a member or renew my current membership.

General Membership - \$20

Group Membership - \$35

YES, I am interested in volunteering at Black Creek project events and activities.

YES, I would like to make a tax-deductible charitable donation of:

\$20, \$50, \$100, Other,

NAME: _____

ORGANIZATION: _____

CONTACT ADDRESS: _____

The BCCP gratefully acknowledges
our supporters:



Community
Environment Fund
EARTH DAY CANADA



CONTACT US

**Black Creek
Conservation Project
of Toronto**

P.O. Box 324, Station A
Downsview, Ontario
M3M 3A6

416-661-6600 x5364

ghorvath@trca.on.ca

www.bccp.ca

Visit our website! www.BCCP.ca